

EUROFLOOR SL-R AN

SYSTEM DESCRIPTION

EUROFLOOR SL-R AN is a 3 component, solvent-free self-levelling flooring system based on EBA and EBF- epoxy- resin, amine curing agent and filler silica, characterized by good mechanical strength and chemical resistance. This system conducts static electricity which can cause damages.

APPLICATION

Suitable areas of application:

- explosion risk areas
- computer rooms
- electrical component production areas
- sensitive electronic component areas
- induction guided transport systems
- hospitals
- laboratories
- power plants

BENEFITS

- Electrically conductive material
- Good mechanical and chemical resistance
- Easy to clean and maintain
- Creates an aesthetic smooth surface
- Creates a tight, impermeable surface
- The glossy surface
- The possibility of obtaining non-slip surface texture

TECHNICAL DATA

Primer	Europox Z, TF, AP used as primer (package: 30 kg, 200 kg)
Copper Tape installed on the primer (50 mtr)	
Conductive primer	Europox WA AN (package: 15 kg)
Conductive self-levelling material	EUROPOX SL AN (package 30 kg)
Dust-Dryness	after 1 day
Full load	48 hours
Full mechanical and chemical resistance	7 days
Hot water temperature resistance	up to 70°C
Chemical resistance to:	oil, grease, gasoline, certain solvents, weak acids and bases
Atest IPO	17/268/2001

SYSTEM EUROFLOOR SL-R AN

THICKNESS	PRIMER	COOPER TAPE	CONDUCTIVE PRIMER	CONSTRUCTION COAT
2,5-3 mm	Europox Z, OS, AP, TF 0,3 – 0,4 kg/m ²	Using 1 mb/m ²	Europox WA AN 0,15 kg/m ²	Europox SL-R AN 3 kg/m ²

APPLICATION

SUBSTRATE PREPARATION

New floors should be clean, well-connected and not crumble and more than 28 days old. In cases of fresh concrete we recommend the use of Europox OS.

If necessary, it should be prepared by grinding or shot blasting machines such to remove laitance and inequality. Concrete should have a high strength (min. concrete B25 tested method of "pull off" > 1.5 MPa) and be free of contaminants such as: grease, oil, dirt, etc.

Old floors require a scarifying or grinding - depending on the state or strength of the floor. The compressive strength must be at least >20 N/mm². Cracks and cavities must be corrected prior application of the primer.

The unevenness of the subfloor should not be more than 50% of the thickness of the layer.

APPLICATION CONDITIONS

Room temperature and substrate should not be lower than 10° C.

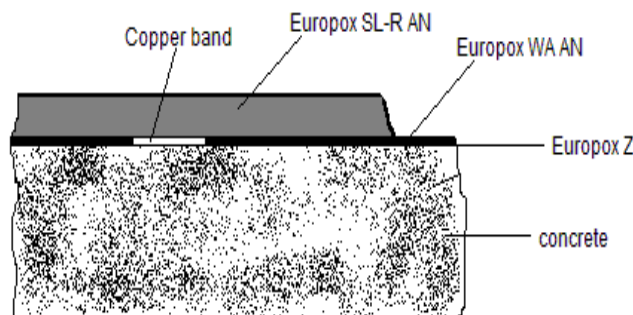
Recommended temperature of the material before the installation: 20°C. The materials should be not applied when the subfloor has the same temperature or lower than the dew temperature.

MIXING AND APPLYING THE MATERIALS

1. Primer : Europox Z, AP, TF using a roller for application
2. Installing of the copper taper in a before agreed network
3. Europox WA AN: application with roller
4. Europox SL-R AN consists of two components capable of reacting, and a third component which is a filler, application with tooth rake and deaired with spike roller.

All the ingredients before pouring must be thoroughly mixed together with the prescribed behavior relations mixing that are to a very large impact on the quality of the final product. The individual components are supplied in quantities mutually adjusted. It is not advised to slow down or accelerate the reaction by varying the amount of hardener. When mixing it is advised to use appropriate mixers powered drills with a turnover of min. 400/min. If you increase the speed, air can be build up in mixed material which causes hardening problems and speeding up the reaction time reduction. All ingredients should be mixed for about 2-3min. After mixing, the mass is ready to install. If in doubt contact you from customer service.

EUROFLOOR SL-R AN SYSTEM LAYERS



EXPANSION JOINTS

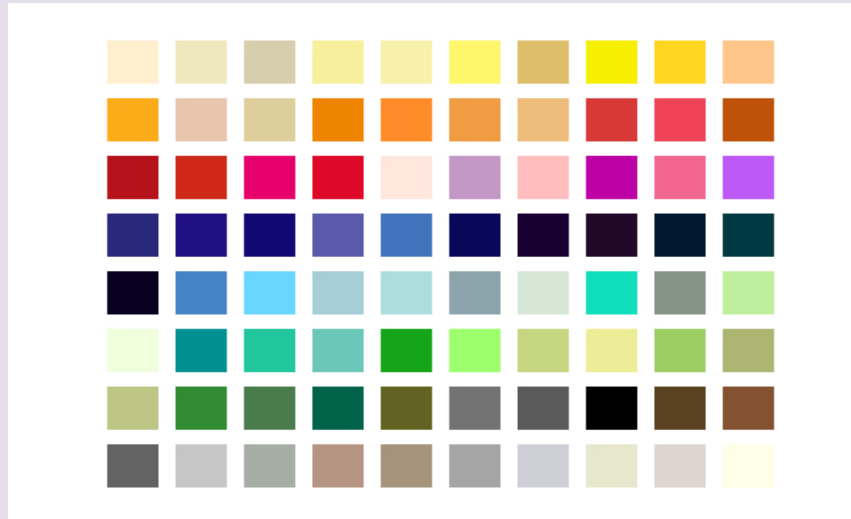
Existing construction floor joints must be marked before the application EUROFLOOR S-R AN and after curing the floor again installed and then filled with elastomeric mass.

FLOOR CARE

The floor should be cleaned frequently and regularly to prevent build up of dirt on the surface. It is recommended the use of alkaline detergent dissolved in water. For more information please read our special information about cleaning epoxy floors.

COLOURS

Colours – in accordance with sampler RAL K7: 1015, 7042, 7032, 7035, 3009, 6021, 5014. (standard colour)
Next colours can be produced.



STORAGE CONDITIONS OF COMPONENTS

- Store in a well sealed receptacles or containers
- open source keep the fire from a distance
- the minimum storage temperature of +5°C
- do not allow contact with skin
- avoid breathing vapours from heated material
- do not allow to contact the individual components with acids, strong oxidizing agents, bases
- the material does not present spontaneous explosion

TERMS OF GUARANTEE

The product should be applied by trained personnel. The supplier bears no responsibility for the errors of the buyer resulting from failure to observe the rules of this TECHNICAL CARD.

FIRST AID

SKIN

- the contaminated clothing should be taken off
- the contaminated skin should be washed with water and a mild washing agent
- do not use solvent
- any wounds should be bandaged using a sterile bandage
- in the event of the continuation of symptoms a doctor should be contacted

INHALATION

- after contact – the victim should be supplied with fresh air
- protect from heat loss and loss of consciousness
- lay down in a resting position

EYES

- the eye should be rinsed thoroughly with clean water
- the eyelid wash with plenty of water
- If the symptoms persist seek medical advice

DIGESTIVE SYSTEM

- drink plenty of water
- give activated carbon
- if the symptoms persist consult a physician.

PROTECTION

1. All workers should be trained in detail in the handling of epoxy resins
2. It is not permitted for persons with allergies to perform work near the resins
3. Protective glasses and gloves should be used if there is a danger of splashing the emulsion
4. After every contact of the emulsion, it is important to wash the hands with water and mild cleaning agents (this is especially important before meals). Do not use benzene, toluent or tetrachloride carbonate!
5. Due to hygienic reasons, there should be no food or drink consumption in the workplace as well as no smoking of tobacco.

ECOLOGICAL INFORMATION GENERAL

- The individual components and their uncured mixture can contaminate water.
- Do not let them reach ground water, water course or sewage system.
- Should always lead to a hardening of the remaining material.
- Cured product residues should be disposed of as artificial material.